



YLI ELECTRONIC

# Electric Bolt with Cylinder

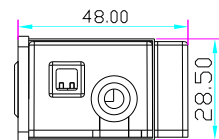
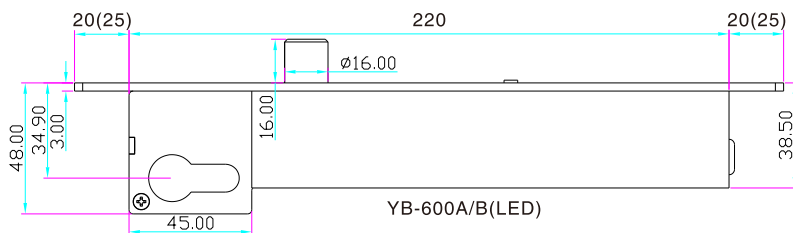
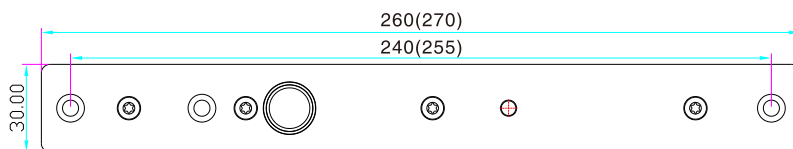
Model: YB-600/630A/B(LED)



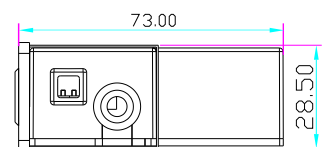
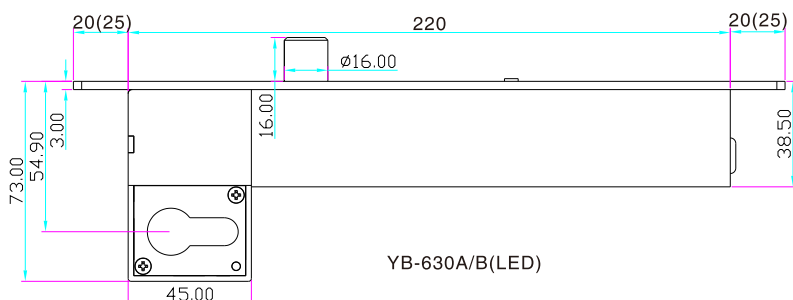
## Parameters

|                    |  |
|--------------------|--|
| Lock Body          | 260/270Lx30Wx48H(mm)[YB-600A/B(LED)]<br>260/270Lx30Wx73H(mm)[YB-630A/B(LED)] |
| Magnetic Plate     | 100Lx25Wx2.5H(mm)  |
| Bolt               | 16(prolongation)*16(diameter)(mm)  |
| Signal Output      | Lock signal(NO/NC/COM)   |
| Time Delay         | 0/3/6/9 sec  |
| Voltage            | 12VDC  |
| Current            | Start 1200mA,Standby 200mA   |
| Feature            | Fail safe[YB-600&630A(LED)]<br>Fail secure [YB-600&630B(LED)]                |
| LED                | Light on indicates locked, light off indicates unlocked                      |
| Detection Distance | Within 8mm   |
| Suitable for       | Wooden door,metal door,fireproof door,glass door                             |
| Material           | 304 stainless steel, wire draw finishing                                     |
| Weight             | 1.6kg/1.8kg  |

## Dimensions



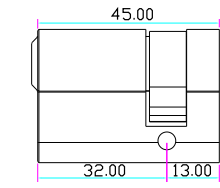
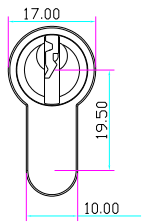
YB-600A/B(LED)



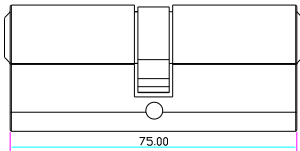
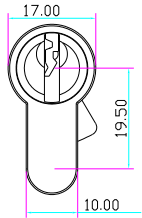
YB-630A/B(LED)

## Optional Accessory

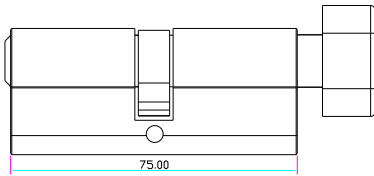
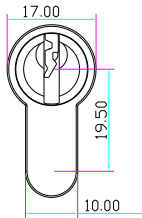
Single side cylinder or both side cylinder, other sizes are available too: 80/90/100/110/120mm.



Single side cylinde

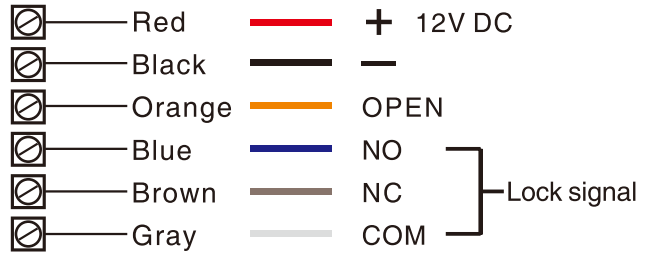


Double side cylinder



Single side cylinder with Thumb

## Wiring Diagram



## Time Delay

Adjust the delay time for locking auto matically 0/3/6/9 secs.



0.0 SEC



6.0 SEC

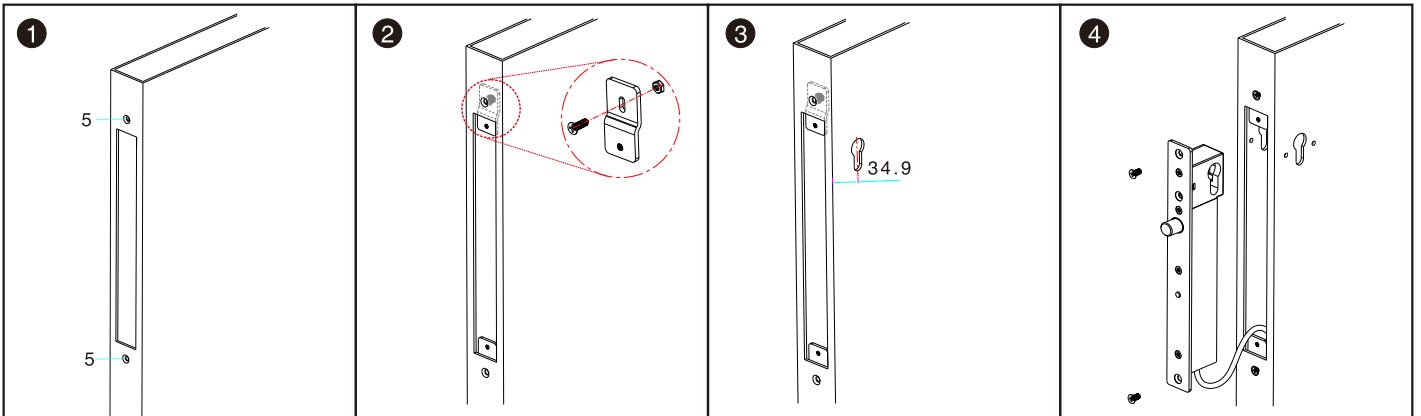


3.0 SEC



9.0 SEC

## Installation steps

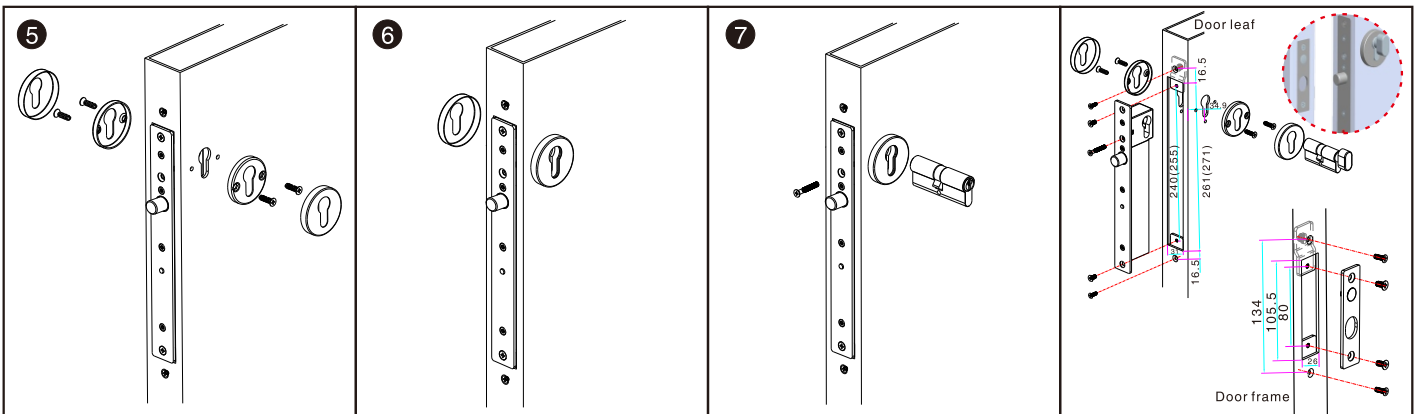


1 Drill and cut our as template indicates

2 Fasten fixing lugs

3 Cut door leaf out for cylinder installation

4 Connect power cable to electric bolt and test it



5 Mount electric bolt and cylinder

6 Fix cylinder's cover

7 Use long screw to tighten the cylinder

Installation Schematic