



YLI ELECTRONIC



Uninterrupted Power Supply

Model: ABK-902-24-5

Basic Instruction

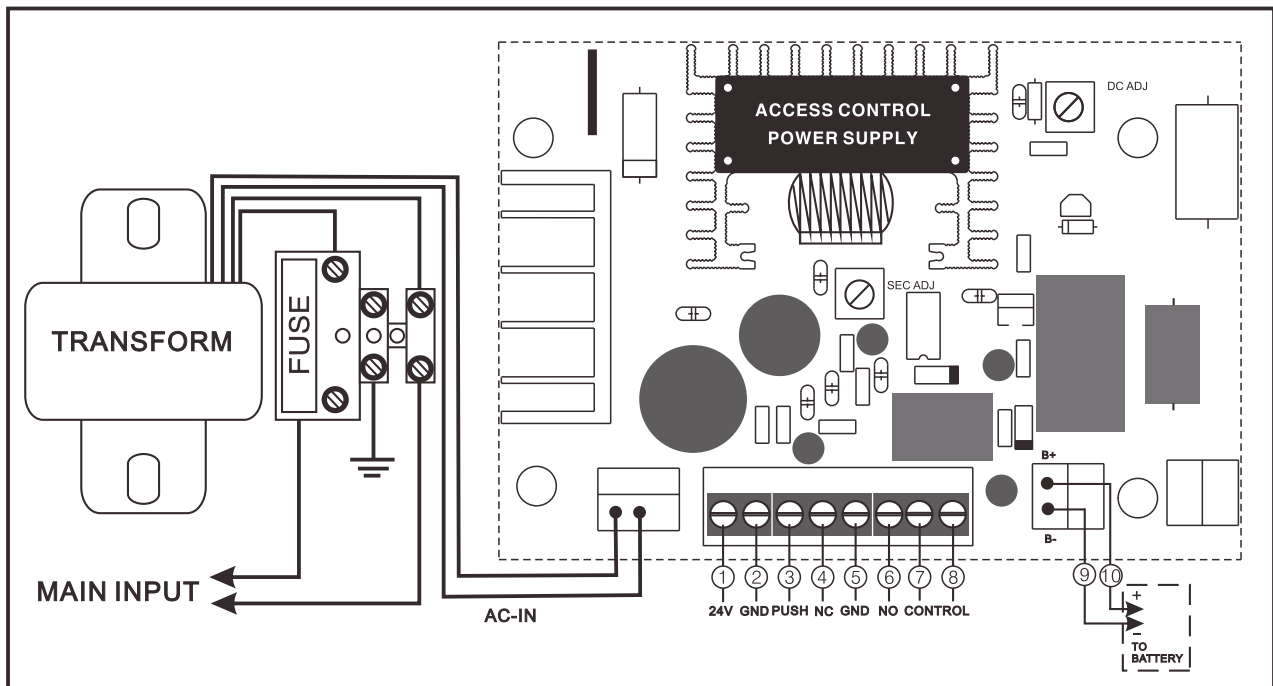
The power supply controller is made with original high-quality imported components. It is professional in design and fine in techniques, and its consistency and quality are ensured.

Specifications:

- 1、 Output voltage:3-30V(24.5V when finished), widely used in electric lock systems such as time attendance access control
- 2、 Input current: $\geq 5A$
- 3、 Self-protection when there is an short circuit.
- 4、 Size: 223Lx213Wx80H(mm).
- 5、 Weight: 2.65kg

Wiring Diagram

Note:This power supply can not be fitted in the occasion of dampness plammability explosive.



(1) **Instruction of output contact:(as the drawing)**

- 1-2: DC24V output, 5A maximal current; 1 for positive ans 2 for negative
- 2-3: Exit button input contacts, suitable for access control system with relay controlled electric lock and time attendance controller.
- 4-5: NC and COM contacts; DC24V output in normal condition; unlock (0-30s) when connected with 2-3 contacts; 4 for positive ans 5 for negative
- 5-6: NO and COM contacts; no output in normal condition; DC24V output (0-30s) when connected with 2-3 contacts; 6 for positive ans 5 for negative
- 7-8: Exit button controller: 24V
- 9-10:Charge contact, 10 for positive ans 9 for negative, respectively to the positive and negative contact of the battery.

(2) **Timer: 0-30 second setting the proper time by adjust secretary Addition.**